

From: [Alison Scheel](#)
To: [Debbie Sherwood](#); [Chris Johnston](#); [Brandon Ward](#)
Cc: [Carolina Khan](#)
Subject: FW: Blade Sign Approval
Date: Wednesday, October 7, 2020 10:42:06 PM
Attachments: [Modular wall bracket specs.pdf](#)
[Straight Arm specs 379b-30-wr.pdf](#)

Good Morning Councilor Sherwood, Chris, Brandon, and Heritage Orangeville Team!

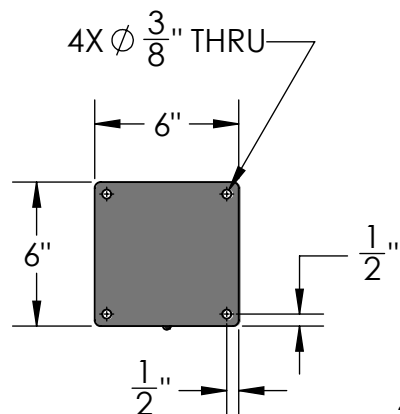
The OBIA would like to take this opportunity to thank you for your assistance in pre-approving 2 blade sign frame/bracket designs for the OBIA's Blade Sign Grant program. The OBIA plans to launch the program in the next few weeks with the goal of having more blade signs on Broadway in the coming months.

Due to the pandemic, the OBIA is sensitive to current economic issues plaguing its membership and would like to offer a lower-cost blade sign frame alternative to the more expensive designs that have already been pre-approved by Heritage Orangeville and Bylaw staff. With this in mind, the OBIA has selected 2 new designs that require your pre-approval. These new designs are classic, simple, and the BIA is confident that these will be more acceptable than the design that was previously rejected. Like the other pre-approved designs, businesses can have these new designs manufactured by Red Iron Designs in London Ontario, order them online through thesignbracketstore.com, or purchase them through a local sign company.

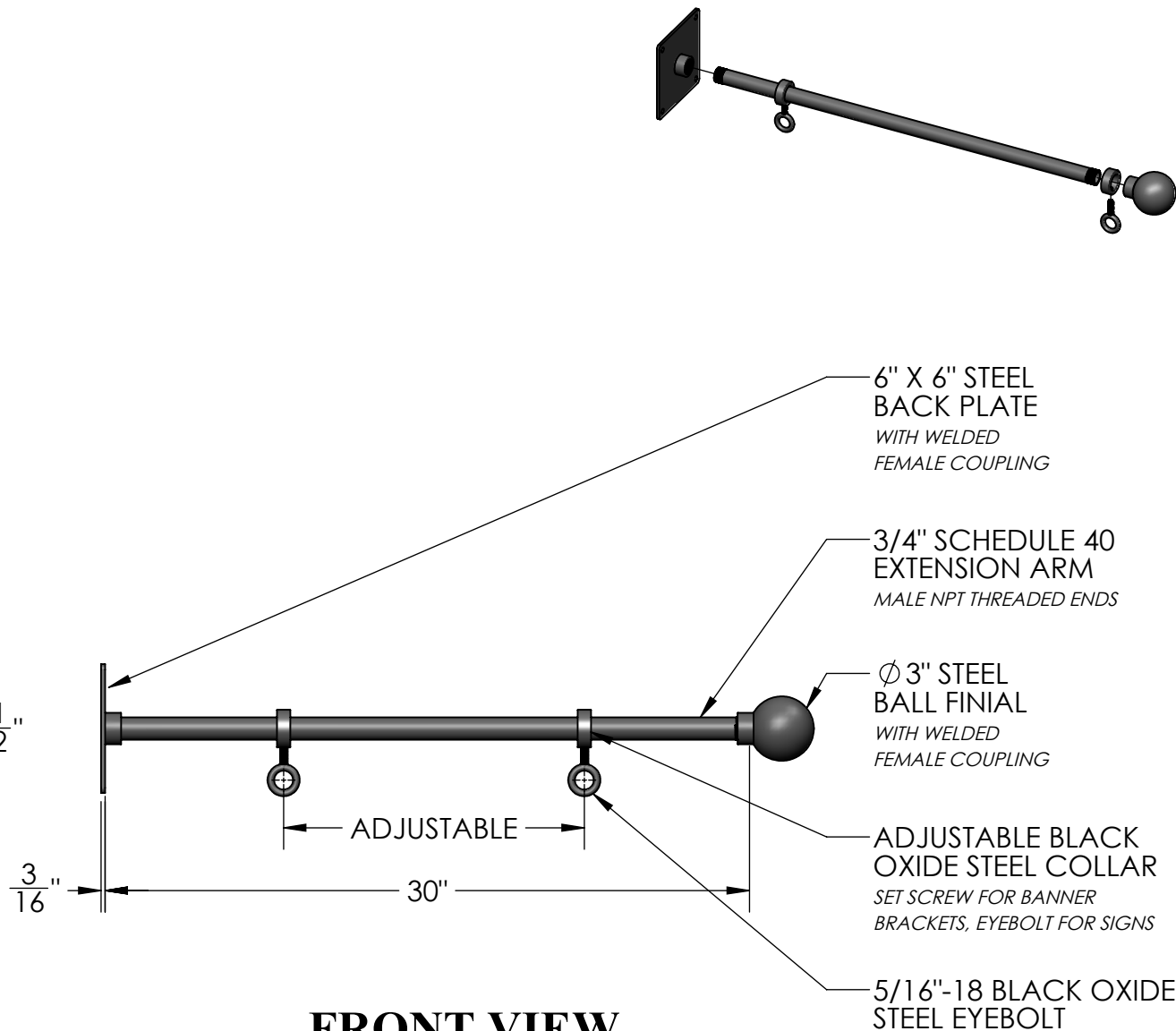
The OBIA respectfully submits the attached designs for Heritage Orangeville and staff's consideration at their earliest convenience.

Please do not hesitate to contact us if you have any questions or require further information.


Best Regards,
Alison

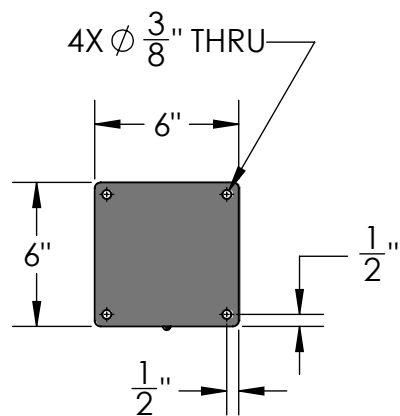


SIDE VIEW

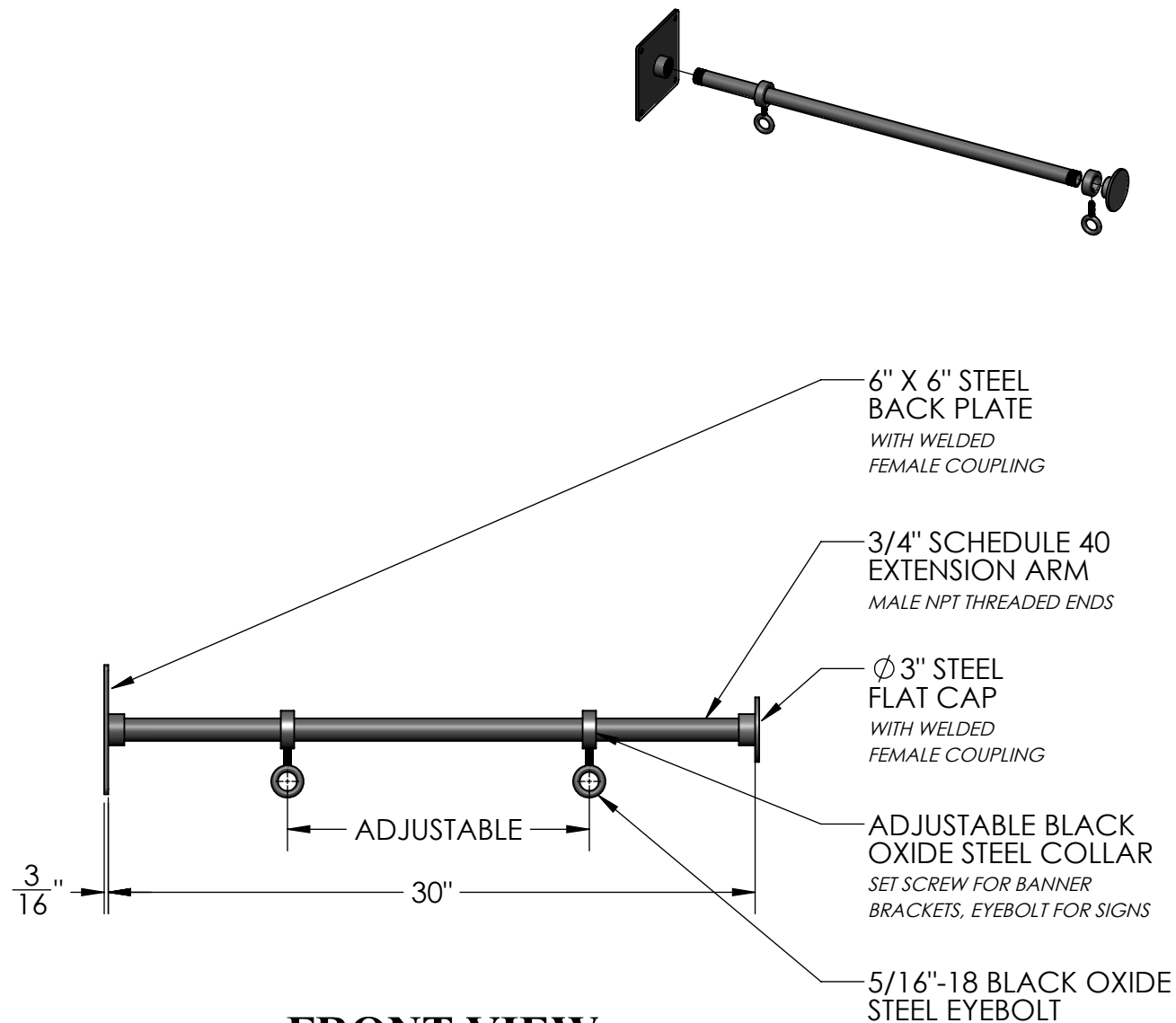


FRONT VIEW


Material: Steel	Content: 30" Modular Wall Mount Sign Bracket Kit PN: 404B-WM-30-WR-BF Color/Finish: Textured Black Powder Coat	Design by Sign Bracket Store. All visual representations and designs are the intellectual property of Sign Bracket Store and protected under copyright law. Any duplication of this design is in direct violation of the law and will result in legal action. © Copyright 2008-2016	SIGN BRACKET STORE <small>By Hooks & Lattice</small>  <small>SignBracketStore.com</small>
Scale: 1:8 DB: CF Rev: A Order#:	Customer Approval: _____	T: 888-919-7446 F: 760-603-0812	



SIDE VIEW



FRONT VIEW

Material: Steel	Content: 30" Modular Wall Mount Sign Bracket Kit PN: 404B-WM-30-WR-FC Color/Finish: Textured Black Powder Coat	Design by Sign Bracket Store. All visual representations and designs are the intellectual property of Sign Bracket Store and protected under copyright law. Any duplication of this design is in direct violation of the law and will result in legal action. © Copyright 2008-2016	SIGN BRACKET STORE <small>By Hooks & Lattice</small>  <small>SignBracketStore.com</small>	T: 888-919-7446 F: 760-603-0812
Scale: 1:8 DB: CF Rev: A Order#:	Customer Approval: _____			



Modular Wall Mount Sign Bracket Kits

[Be the first to review this product](#)

In stock


Ships In Contact for availability

SKU#: 404B-WM-WR

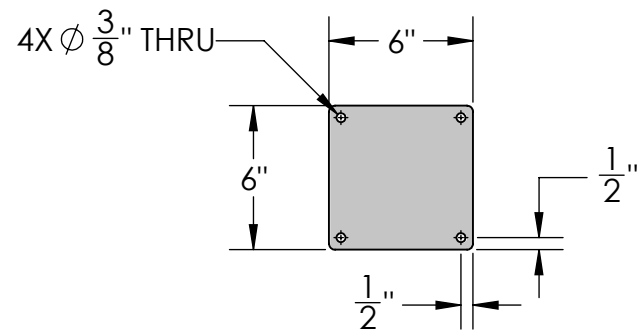
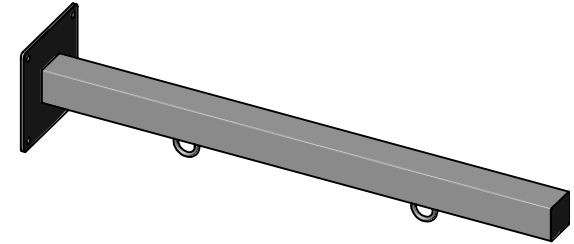
Modular Wall Mount Sign Bracket Features:

- Comes as a set you put together easily
- Can be permanent or temporary, it's totally modular!
- You choose where to put the ring centers
- Customize with a flat cap or ball finial
- Installation hardware not included

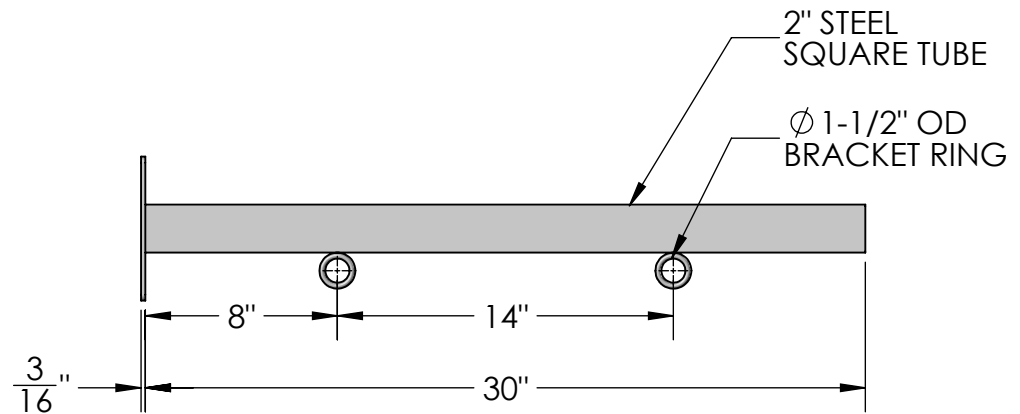
ADD TO CART

Image	Product Name	Price	Qty
	20in. Modular Wall Mount Sign Bracket Kit SKU#: 404B-WM-WR-20 <i>Ships In Contact for availability</i>	\$119.85	Out of stock
	30in. Modular Wall Mount Sign Bracket Kit SKU#: 404B-WM-WR-30 <i>Ships In Contact for availability</i>	\$139.85	Out of stock

REVISIONS			
REV.	DESCRIPTION	DATE	CB
A	ORIGINAL DRAWING	4/22/2016	CF



SIDE VIEW



FRONT VIEW

Material: Steel	Content: 30" Universal Straight Arm Bracket w/Rings PN: 379B-30-WR	Design by Sign Bracket Store. All visual representations and designs are the intellectual property of Sign Bracket Store and protected under copyright law. Any duplication of this design is in direct violation of the law and will result in legal action. © Copyright 2008-2016	 SIGN BRACKET STORE
Scale: 1:8 DB: CF Rev: A	Color/Finish: Textured Black Powder Coat		
Sheet: 1 of 1	Customer Approval: _____		

T: 888-919-7446

F: 760-603-0812



Straight Arm Sign Bracket with Rings

[Be the first to review this product](#)

In stock

Ships In 2-3 Business Days

SKU#: 379B-X-WR

Straight Arm Sign Bracket with Rings features

- Constructed from 2" square steel for simple strength
- Modern clean approach for signage
- Powder-coated black for rust resistance
- Custom sizes are available, call today for a quote 888-919-7446
- Specifications by size in Downloads below

ADD TO CART

Image

Product Name

Price

Qty



30" Straight Arm Sign Bracket with Rings

SKU#: 379B-30-WR

Ships In 2-3 Business Days

\$175.85

0