

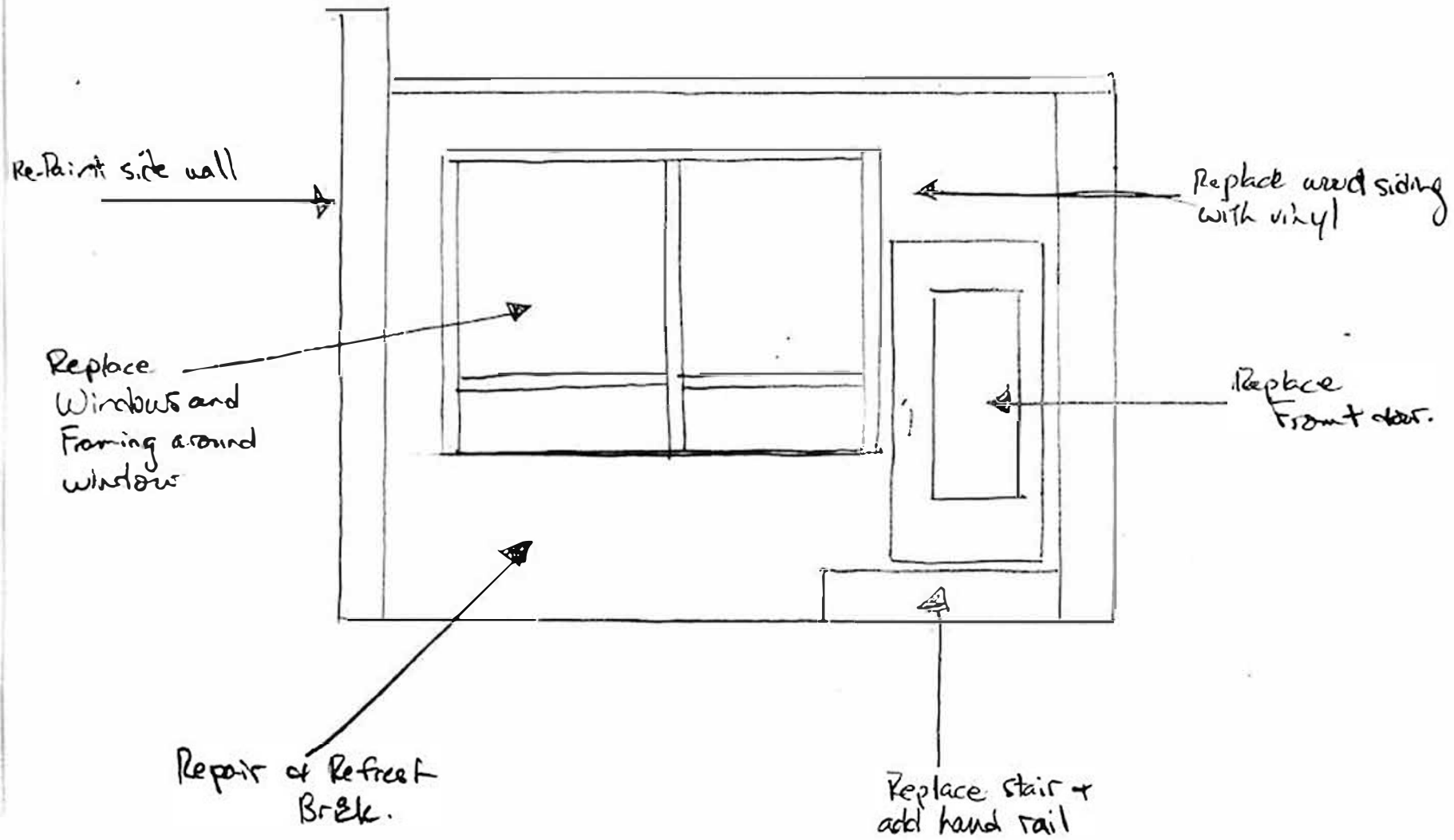
## Attachment 1 - Existing Conditions



# Attachment 1 - Existing Conditions



Attachment 2 - Approved Facade Improvement





My Store: **GUELPH** ✓  
**Open** • Closes 9 p.m.

Search over 200,000 products



My Account

0 Cart



Shop by  
Department



Shop by  
Room



Ideas &  
How-to



Home  
Services



Promotions &  
Offers



Weekly  
Flyer

NOBODY BEATS OUR PRICES GUARANTEED. [Terms & Conditions](#)



## Masonite 32-inch x 80-inch x 4-9/16-inch Brant 1/2 Lite Left Hand Heavy Duty Steel Entry Door

Model # 286426 | Store SKU # 1001062449

★★★★★ (4) | [Write a Review](#) | [Q&A \(1\)](#)

**\$509.00** / each



✓ **1 in Stock** at [Guelph](#) | Aisle 24, Bay 010



Qty

1

**Add To Cart**

Pick-Up Store: [Guelph](#)

Delivery options for [N1H 1G8](#)



**PICK UP IN-STORE**

**FREE** Pick-Up



**EXPRESS DELIVERY**

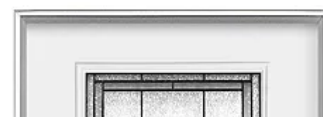
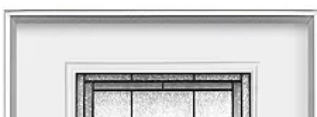
Get it **today** within **3 hours** for  
a delivery fee of **\$70.00**

[See more delivery options](#)

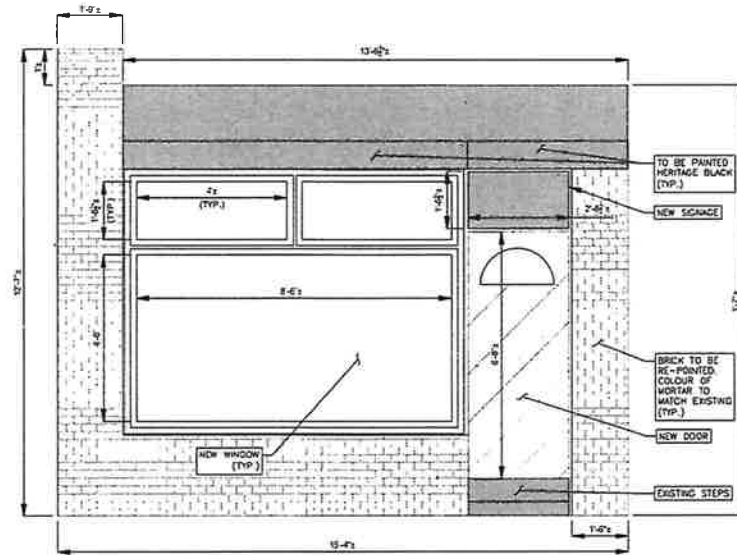
Price and availability may vary by store, and  
between online and in-store. [Click here for  
details.](#)



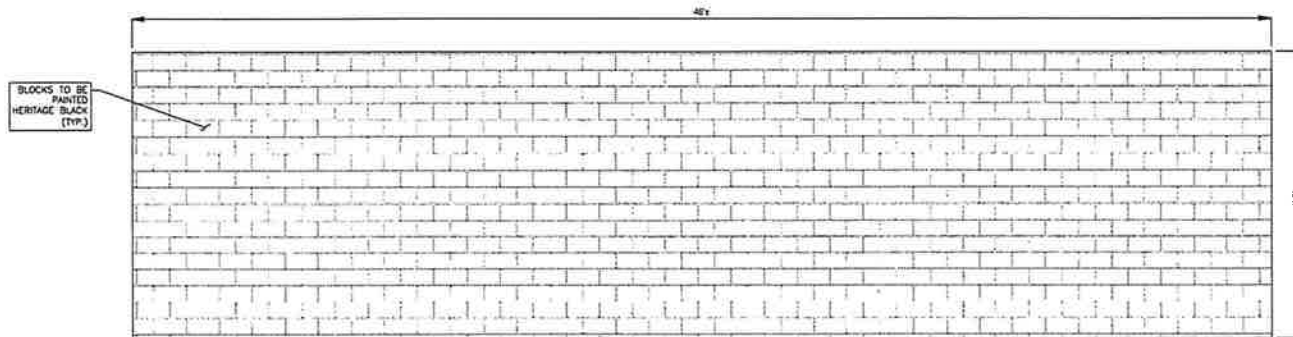
## Customers Who Viewed This Item Bought



# SITE RENOVATION – 7 MILL STREET



1 SITE RENOVATION – FRONT  
SCALE 1:20



2 SITE RENOVATION – SIDE  
SCALE 1:30

## NOTES

0		08.17.21	ISSUED FOR PERMIT
No.		DATE	REVISION

UNIT 7, 265 HANLON CREEK BLVD  
GUELPH, ONTARIO  
N1C 0A1  
T 519-400-6873  
www.centex.ca

**COHAGAIL  
CONSTRUCTION**

7 Mill Street,  
Orangeville, Ontario

**SITE RENOVATION**

DRAWN BY	MA	SHEET
DESIGNED BY	MA	A2
CHECKED BY	JH	
PROJECT NUMBER	532	
DATE	08.17.21	
SCALE	AS NOTED	