

Town of Orangeville Growth Management Study

Update to Official Plan Steering Committee

April 7, 2026



Introduction

- **Town has retained Watson & Associates to prepare a Growth Management Study**
- **Evaluate the Town's growth potential and inform future population and employment growth**
 - **Constrained Scenario**
 - **Unconstrained (Expansion) Scenario**
- **Assess location options for a future boundary expansion**
- **Following are highlights from the Consultant's findings presentation to the project working group in March 2026**

Growth Forecast Scenarios

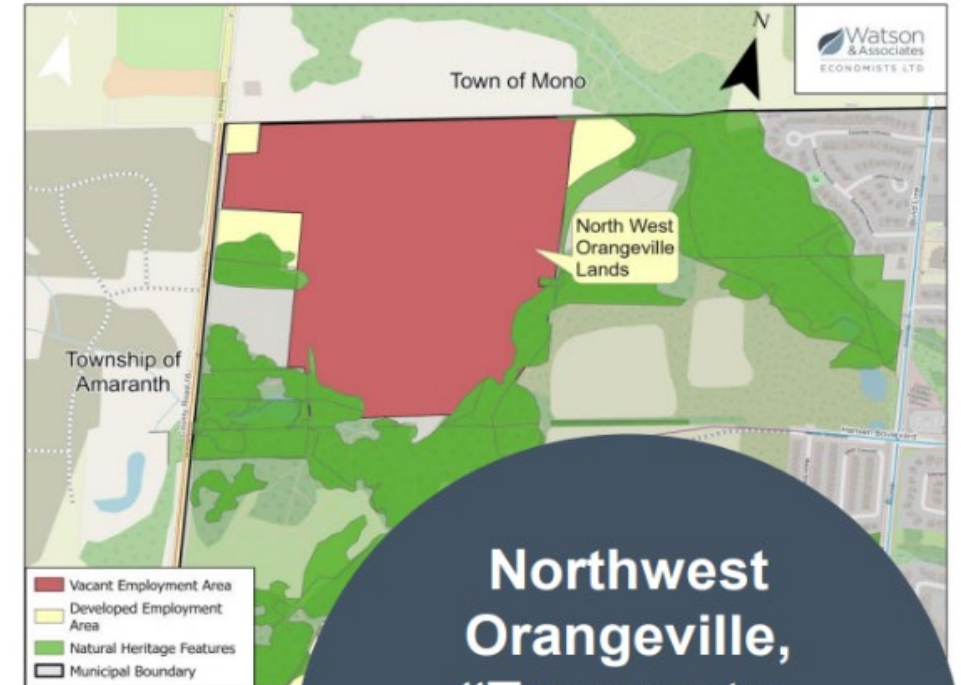
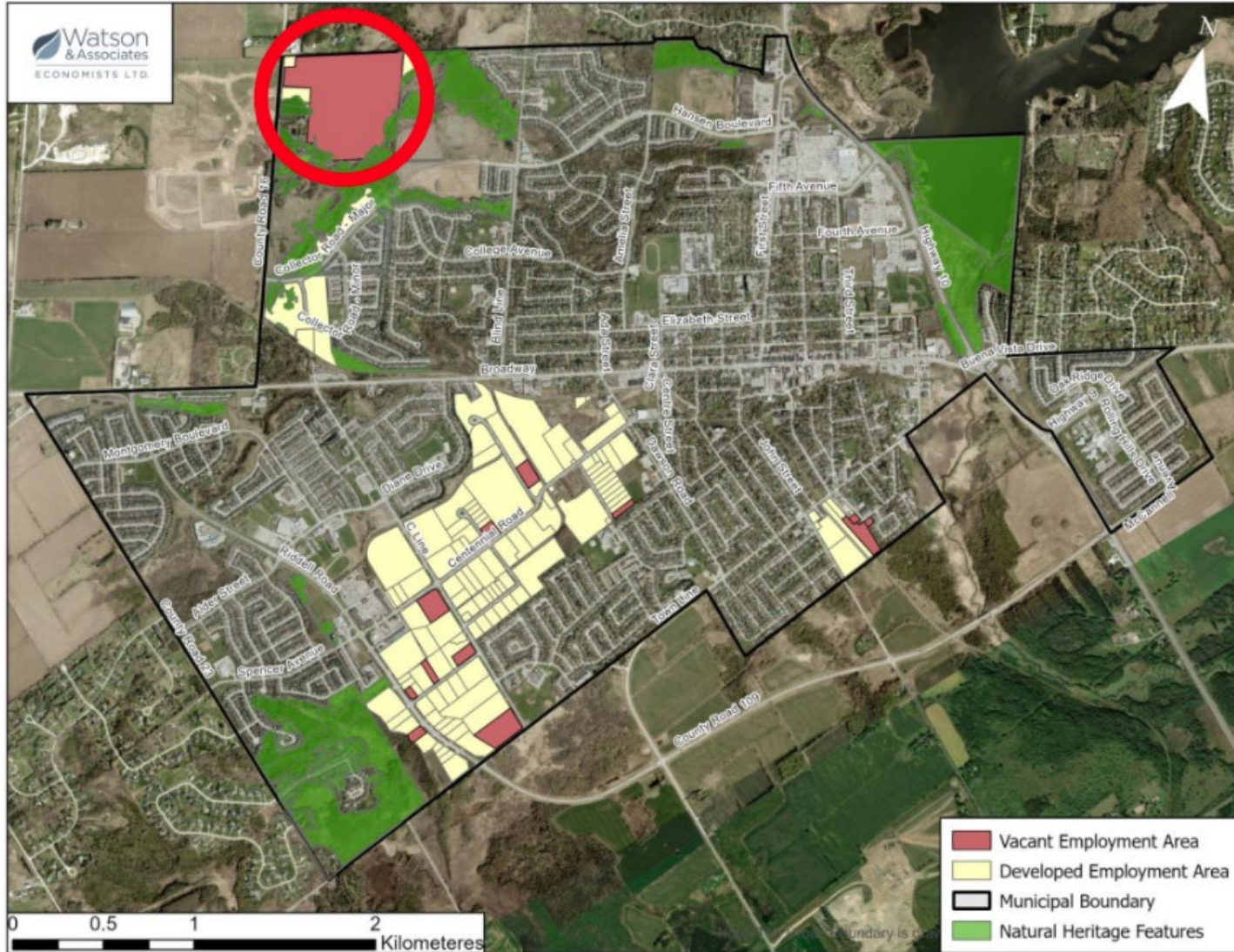
Constrained Scenario

- **Constrained by availability of land and servicing capacity**
- **Can support growth up to 36,400 people**
 - 13,900 households
 - 16,100 jobs
- **Buildout forecast: 2045**

Unconstrained Scenario

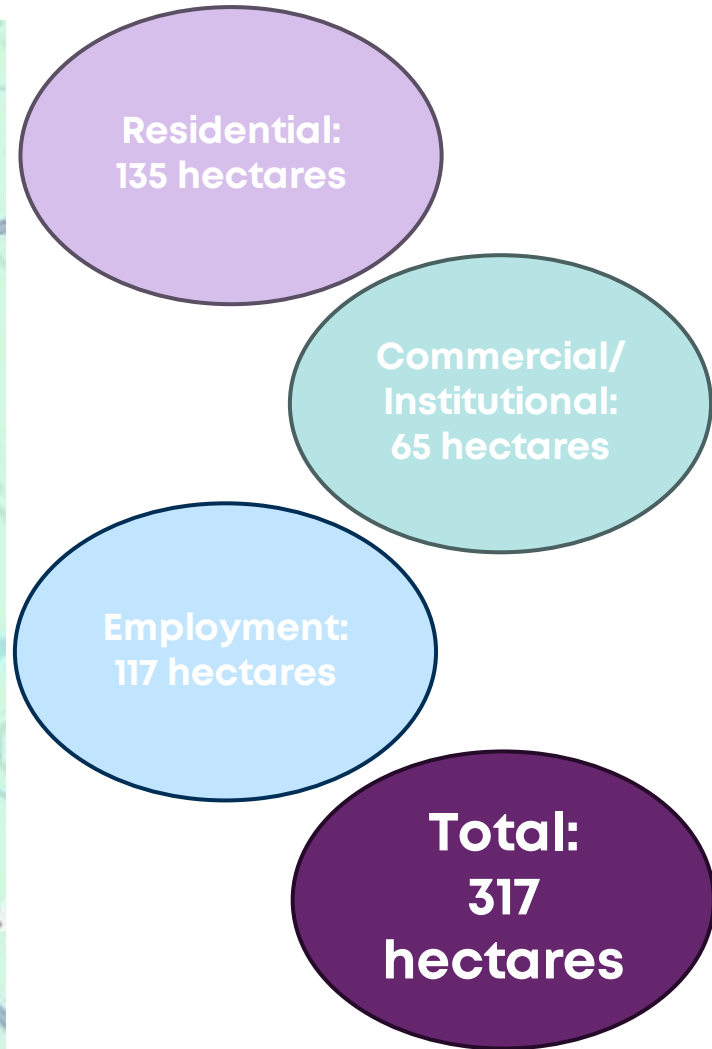
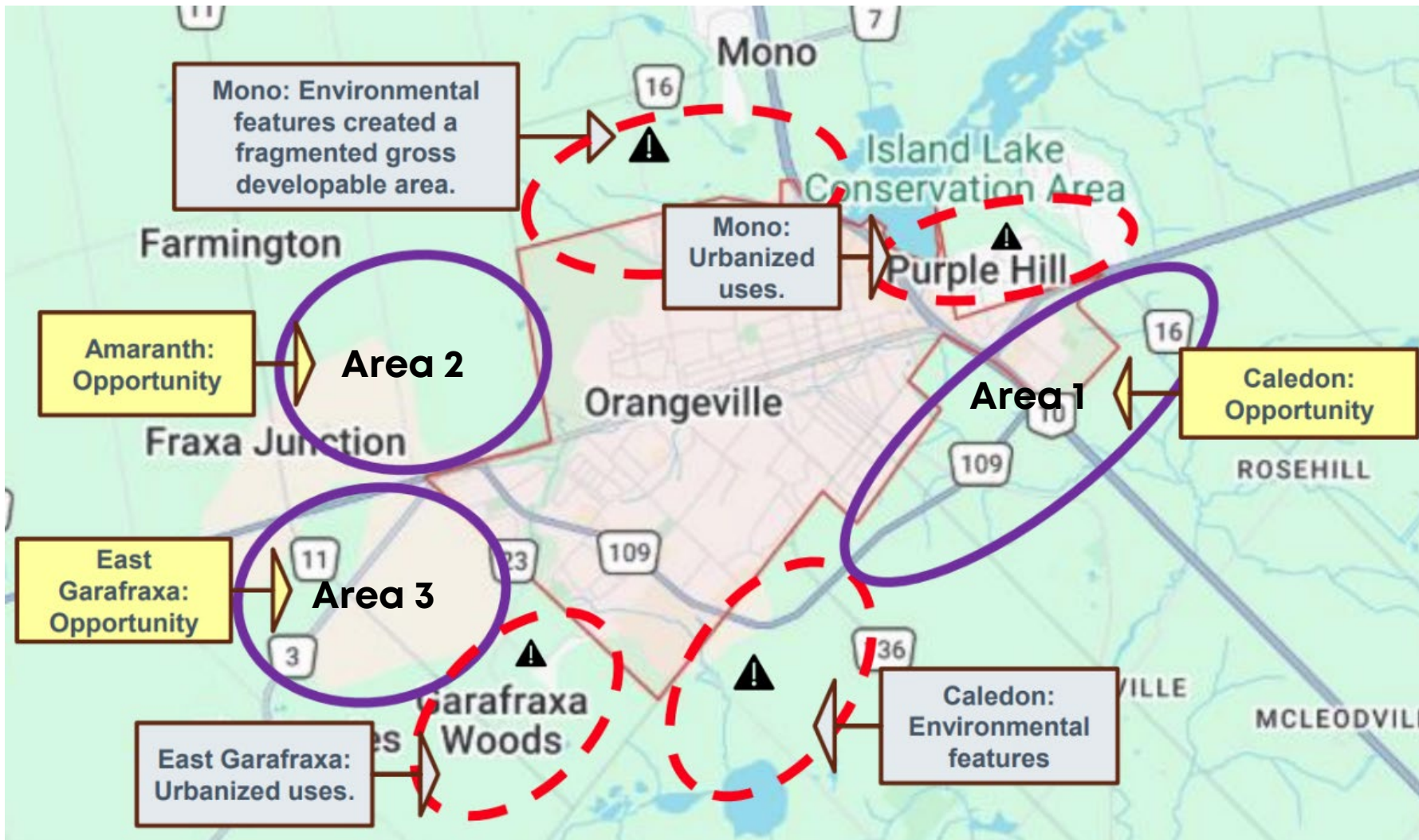
- **Assumes there are no servicing and land constraints**
- **Can support growth up to 44,700 people**
 - 17,900 households
 - 21,800 jobs
- **Buildout forecast: 2076**

Employment Area Removal



**Northwest Orangeville, “Transmetro Lands”:
28 hectares (72% of vacant land)**

Land Needs & Potential Expansion Areas



Potential Expansion Areas – Statistics

	Area 1	Area 2	Area 3
Municipality	Town of Caledon	Township of Amaranth	East Garafraxa
Gross Developable Land Required	317 hectares	317 hectares	317 hectares
Gross Developable Land Area	Approx. 410 hectares (77% of land is needed)	Approx. 341 hectares (93% of land is needed)	Approx. 336 hectares (94% of land is needed)
Adjacent O.P. Designations in Orangeville	<ul style="list-style-type: none"> - Residential - Open Space - Institutional 	<ul style="list-style-type: none"> - Residential - Employment Area (recommended for removal) 	<ul style="list-style-type: none"> - Residential - Open Space - Institutional
Current O.P. Designation in the Respective Municipality	<ul style="list-style-type: none"> - Rural Lands - Natural Heritage 	<ul style="list-style-type: none"> - Employment Use - Countryside Area - Natural Heritage 	<ul style="list-style-type: none"> - Employment Use - Countryside Area - Natural Heritage
Access to Major Road	<ul style="list-style-type: none"> - County Road 109 - Highway 9 	<ul style="list-style-type: none"> - County Road 109 - Highway 9 - County Road 16 	<ul style="list-style-type: none"> - County Road 109 - Highway 9

Next Steps

**Present Land
Needs & Location
Options to Council**

April 13, 2026

**Growth Scenarios
Evaluation**

April 2026

**Municipal Fiscal
Impact Analysis**

May 2026

**Final Report to
Council**

July 13, 2026

Questions or Comments?

