

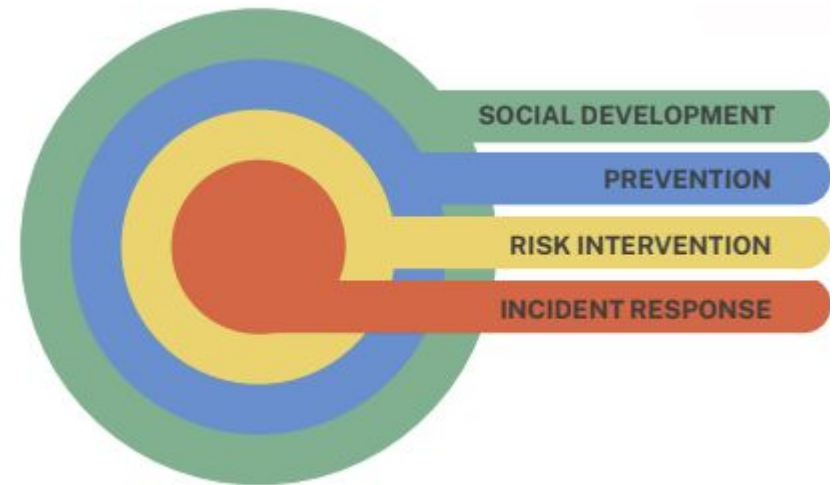
Dufferin County Community Safety and Well-Being Plan



Presentation to:
Town of Orangeville

Dufferin CSWB Plan

- Province mandated CSWB Plans in 2021 and review in 2025
- Community reports have been done since 2012
- Four-year plan (2025 – 2028)
- Shared plan for all of Dufferin County
- Strengths-based
- Focus on risk and protective factors
- Leverage community resources
- Approved by County Council May 2025



Dufferin CSWB Integration Table

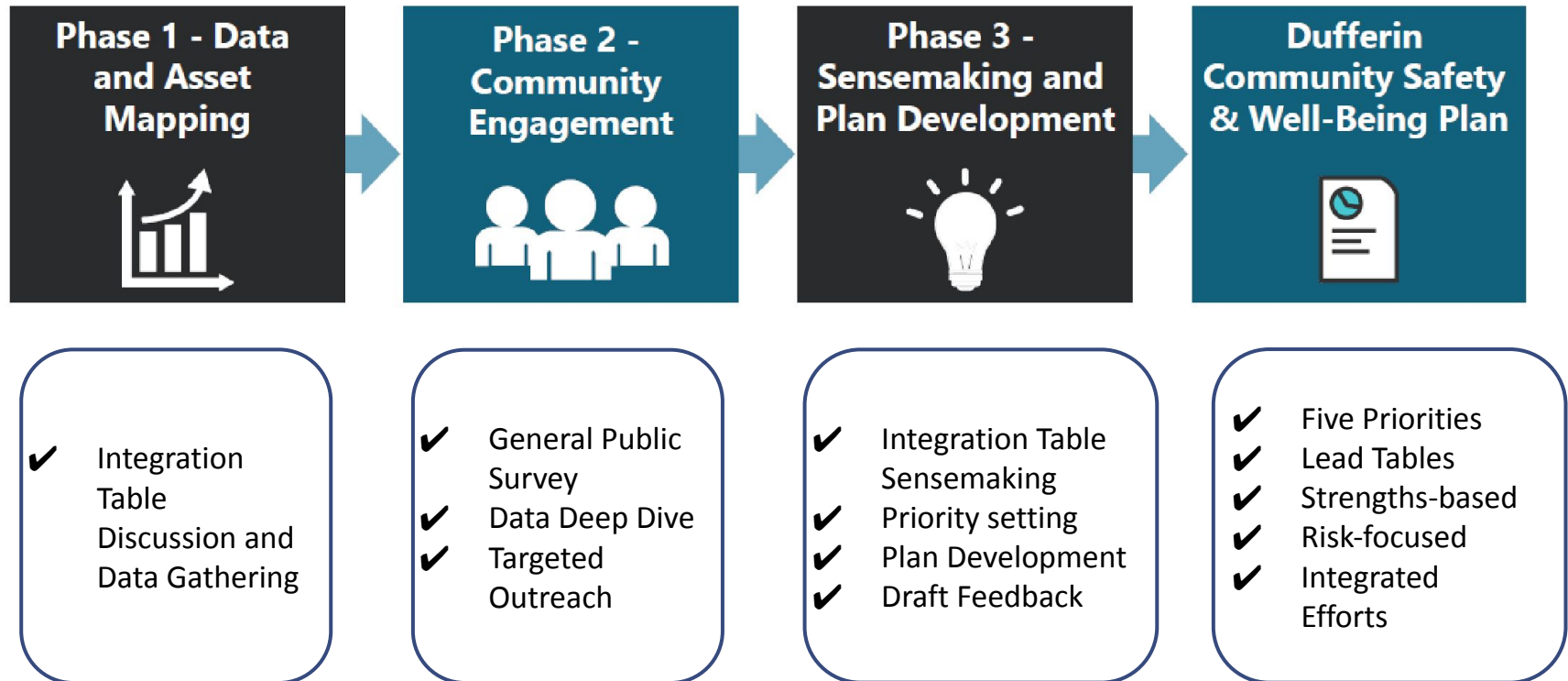
Alzheimer's Society - Dufferin County
Caledon\Dufferin Victim Services
Canadian Mental Health Association
Peel Dufferin
Community Living Dufferin
County of Dufferin
Domestic Assault Review Team
Dufferin Area Family Health Team
Dufferin Child and Family Services
Dufferin Community Foundation
DC MOVES
Dufferin Paramedic Services
Family Transition Place

Hills of Headwaters Ontario Health Team
Headwaters Communities in Action
Dufferin Ontario Provincial Police
Dufferin OPP Detachment Boards:




- Mono/Mulmur/Melancthon
- Orangeville
- Shelburne
- Southwest (East Garafraxa, Amaranth, Grand Valley)

Polycultural Immigrant & Community Services
Services and Housing In the Province
Wellington-Dufferin-Guelph Public Health

Development of the Plan



General Public Survey

- Conducted between December 2023 and February 2024
- 607 responses  Confidence Interval (CI): 3.96% 
- Demographic mix of respondents aligned with Census for Dufferin 
- Questions included self-reporting on QOL / SDH factors and perception / community priority questions.

Respondents from municipality	2023/2024 Survey	2020 Survey	Population % of Dufferin
Amaranth	7.7	3.6	6.5
East Garafraxa	6.8	3.0	4.2
Grand Valley	9.6	17.4	5.8
Melancthon	5.9	3.0	4.7
Mono	11.2	13.2	14.2
Mulmur	5.4	7.4	5.4
Orangeville	34.6%	36.3%	45.5%
Shelburne	11.5	5.7	13.6

Priority Areas for the CSWB Plan

COMMUNITY SAFETY



HOUSING & HOMELESSNESS



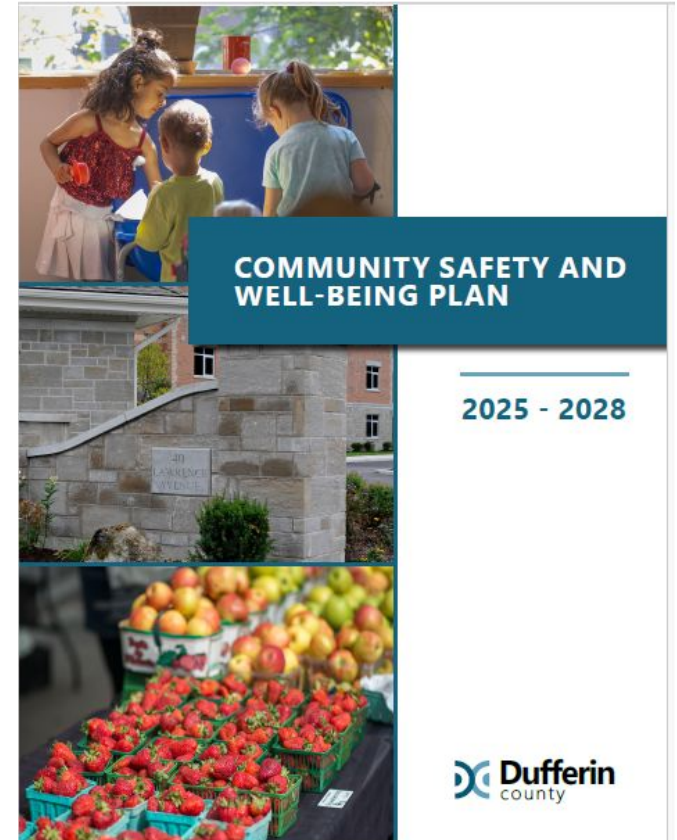
MENTAL HEALTH & WELL-BEING



FAMILY SUPPORT



FOOD INSECURITY



Priority Area Profiles

Situation	<i>What we heard and what we know</i>
Strengths	<i>What is working well</i>
Risks	<i>What we heard</i>
Plan	<i>What we'll do and what we aim to see</i>
Lead	<i>Who holds knowledge in this area</i>
Outcomes	<i>What does success look like</i>
Measures	<i>How will we know we are successful</i>
Actions	<i>What will we do to ensure success</i>
Statement of Change	

CSWB Lead Tables

Priority Area	Lead Table
Community Safety	Dufferin OPP, on behalf of Detachment Boards*
Housing and Homelessness	Dufferin County Equity Collaborative – Housing & Homelessness Work Group
Mental Health & Well-Being	Hills of Headwaters Ontario Health Team Mental Health and Addictions Community Working Group
Family Support	Dufferin Child and Family Services
Food Insecurity	Dufferin County Equity Collaborative – Dufferin Food Access Subcommittee

CSWB Integrated Efforts

PRIORITY AREA	FOCUS
Integrated Efforts	<p>Build understanding and connection within the CSWB Integration Table</p> <ul style="list-style-type: none">• Provide a place for connection, sharing information, breaking silos, promoting programs and updating data.• Identify points of alignment among priority areas and action plans. <p>Support information sharing between CSWB Integration Table partner organizations.</p> <p>Engage all CSWB Integration Table members in sharing stories highlighting their ongoing work and potential areas of alignment and intersection across the CSWB framework.</p> <ul style="list-style-type: none">• Support data sharing and evidence-informed decision making.• Build relationships and advocate for community-wide action.• Socialize the plan to municipalities, police detachment boards, community groups and individuals.

Intersecting Priority Areas

“

Living with food insecurity affects my health in so many ways. I constantly feel tired and weak because I'm not getting the nutrients I need. It also takes a toll on my mental health. The stress of not knowing if I will have enough to eat is overwhelming. I developed anxiety and depression, which makes it even harder to take care of myself and my family. It feels like a never-ending cycle of struggle and despair.

”

– VOICES Member

COMMUNITY SAFETY



HOUSING & HOMELESSNESS



MENTAL HEALTH & WELL-BEING



FAMILY SUPPORT



FOOD INSECURITY



COMMUNITY SAFETY



HOUSING & HOMELESSNESS



MENTAL HEALTH & WELL-BEING



FAMILY SUPPORT

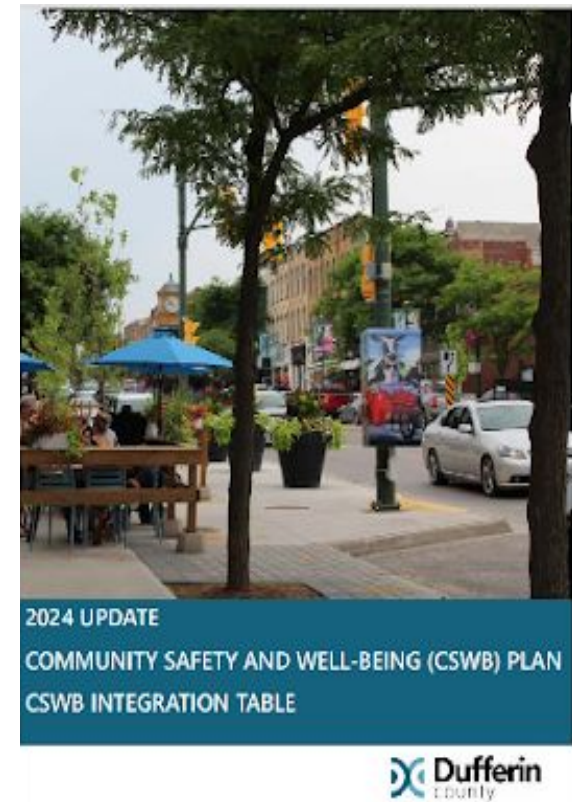


FOOD INSECURITY



Performance Measurement Framework

1. Outcomes and performance measures for each of the priority areas
2. Performance measurement dashboard
3. Annual report
 - June of each year
 - Priority area updates
 - 2024 Update Report focused on updates from the Lead Tables and wrap up of the 2021-24 CSWB Plan



Role for Local Municipalities

Working with CAOs to identify the actions being taken/that your municipality can take to assist with moving the CSWB Plan forward

- Make link to CSWB Plan on Council reports and in strategic plans
- Maintain staff mental health and well-being programs
- Provide workplace training related to the priority areas
- Work on the Official Plan
- Consider including in policies, and by-laws
- Support CSWB communications and spread the word

- Invest in municipal infrastructure that is ready for growth and improves mobility safety
- Work on trails, sidewalks, roads, lighting
- Speed reduction/enforcement initiatives
- Housing initiatives
- Seek out opportunities to integrate efforts and collaborate

Next Steps

- Quarterly meeting of the CSWB Integration Table
- Implementation and Communication Strategies and Annual Action Plans
- Develop Relationships
- CSWB Plan 2026 Update Report (June)
- Conduct the 2027 community survey
- Develop the next four-year CSWB Plan (Q1 and Q2 2028)

thank you!

Keep in touch: cswb@dufferincounty.ca



COMMUNITY SAFETY
AND WELL-BEING