

# Community Resilience Hub



# Since We Last Met...

- ✓ Community Engagement Phase 2
- ✓ Edelbrock Centre – Human Health and Services Hub
- ✓ Initiated collaboration with artist from Mississauga of the Credit First Nation for design consultation and artwork development
- ✓ *Impactability* supporting accessibility through consulting services

# Community Engagement Findings

Phase 2

# Where We've Been

## Committees & Consultants

- Access Orangeville (March 20)
- Access Dufferin (March 19)
- Sustainable Orangeville (April 3)
- Cathie Jamieson (MCFN)

## Community – 213 one on one conversations

- Join in Dufferin (Month of March)
- Home & Garden Show ( April 4 -6)
- Shelburne Rotary Club (March 20)
- Shelburne Library (March 22)
- Orangeville Library (March 25)
- Youth Climate Activation Circle (March 24)



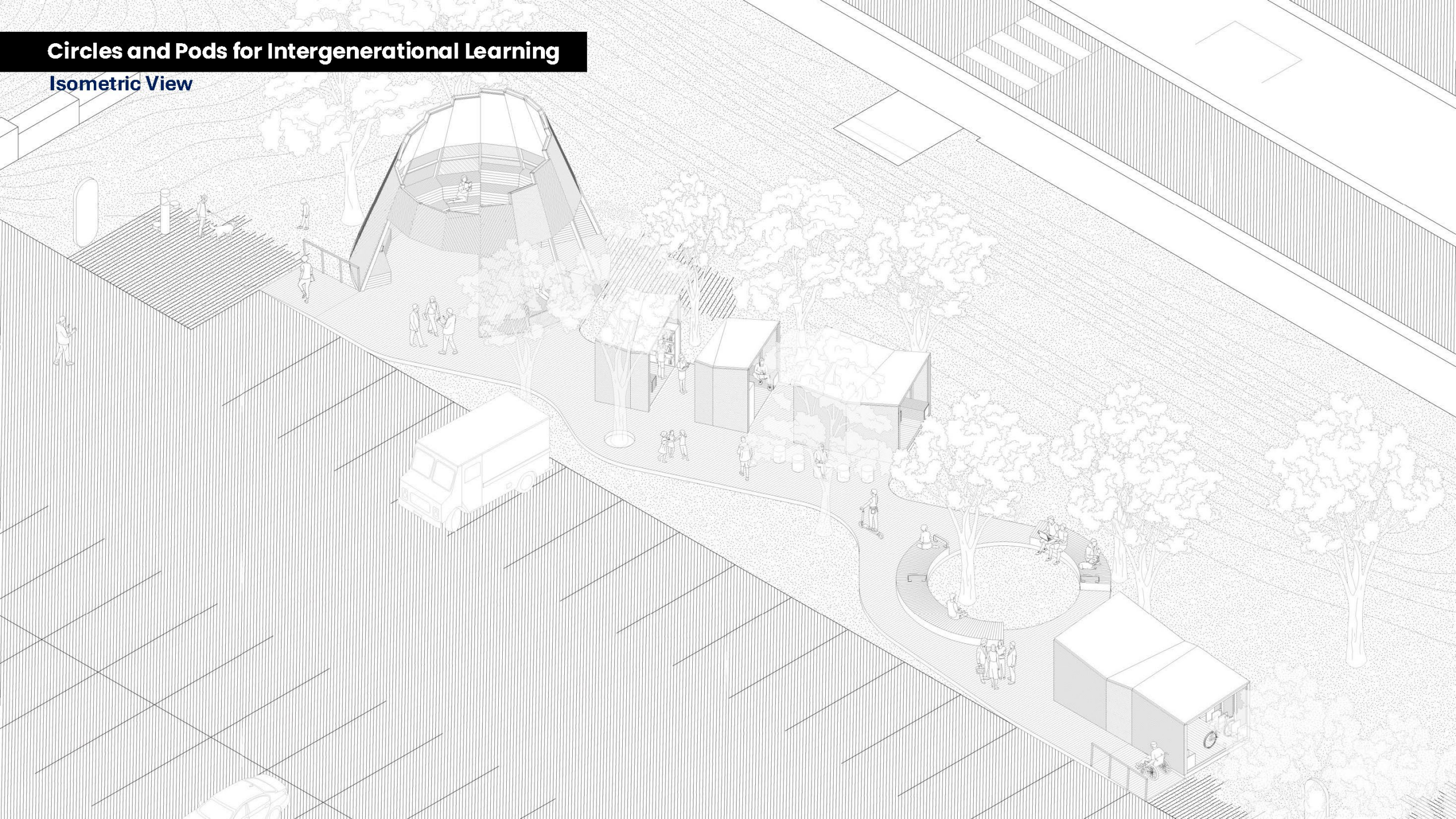


# Designs

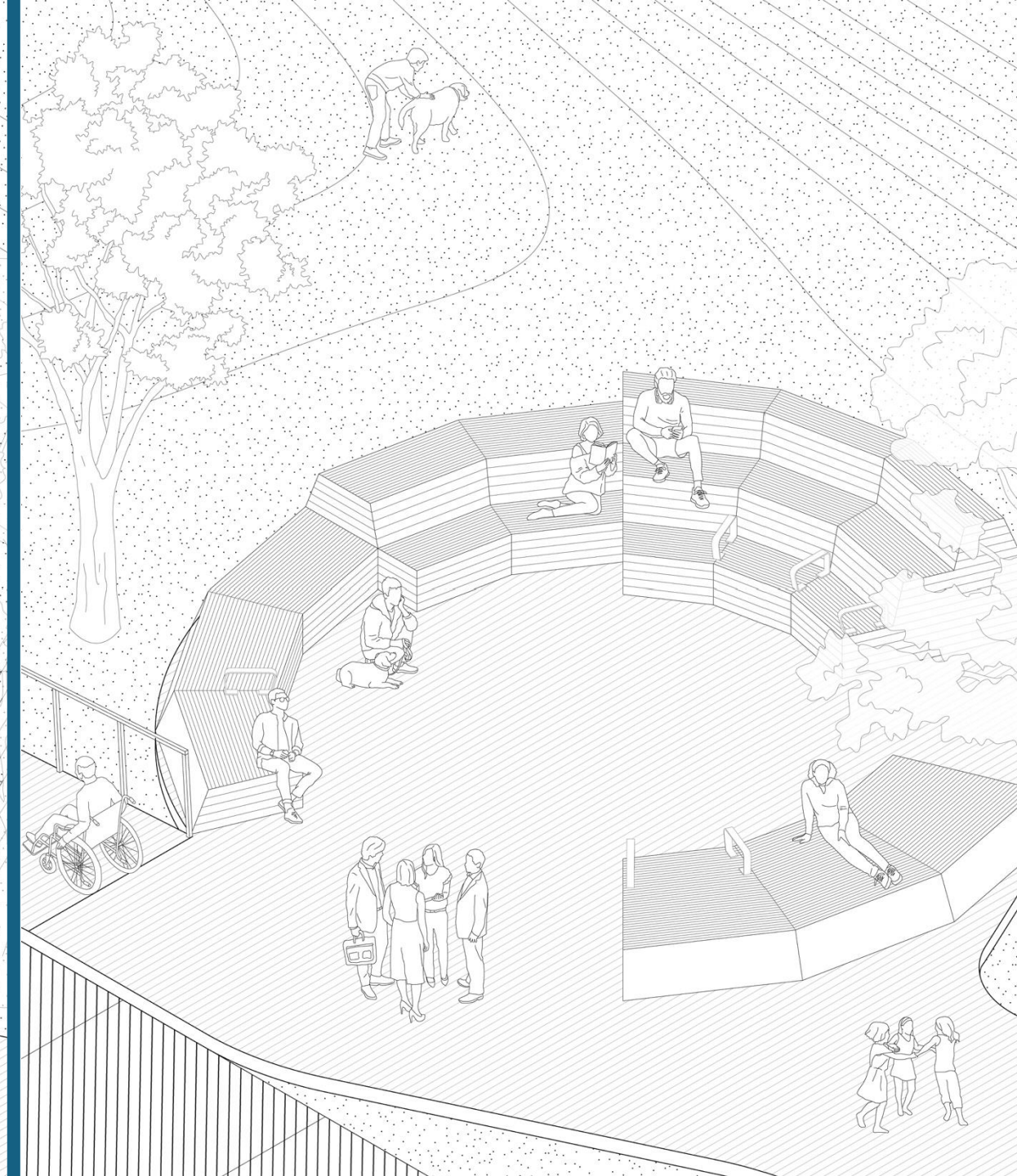
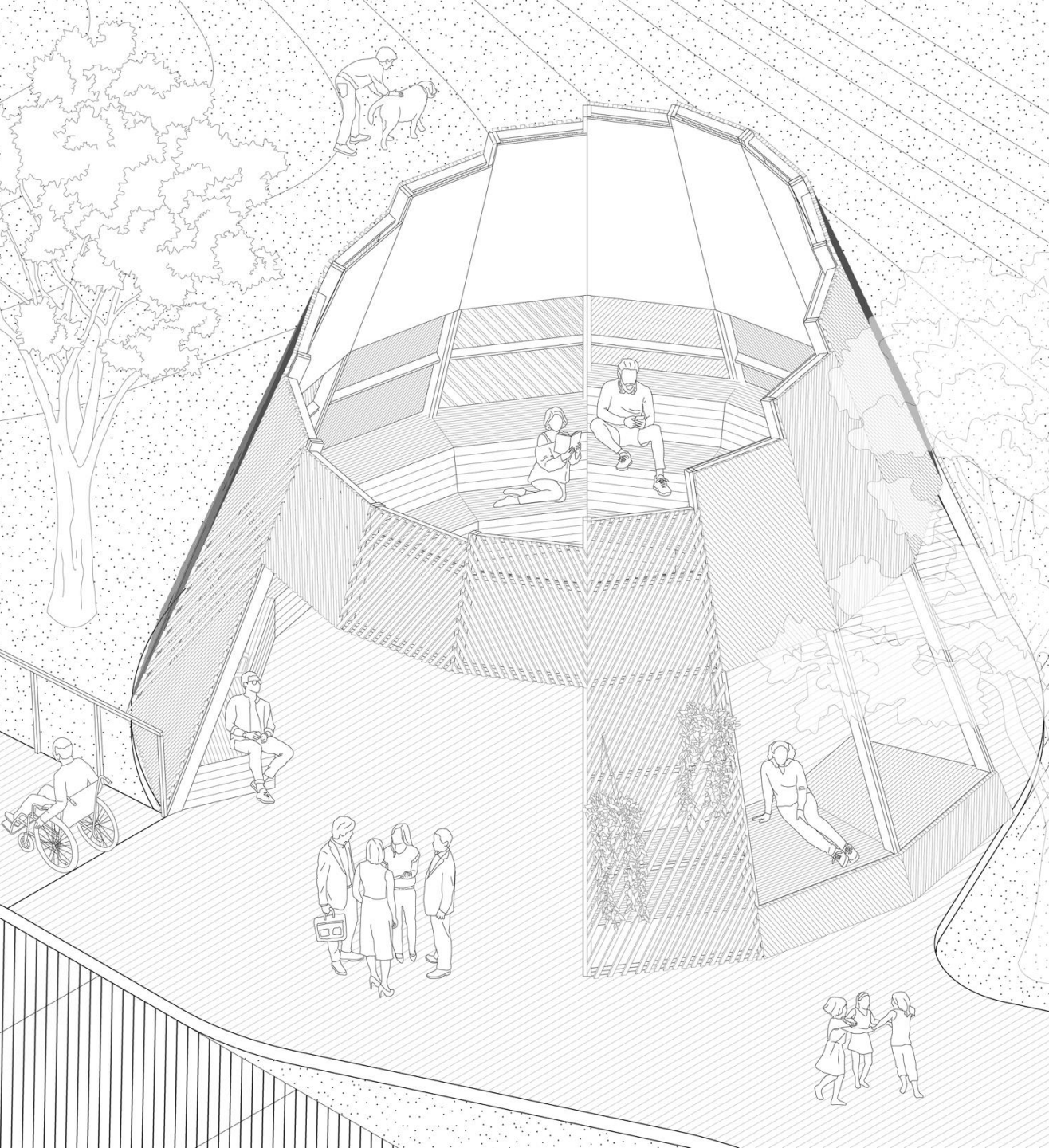
(Still in Progress)

# Circles and Pods for Intergenerational Learning

Isometric View



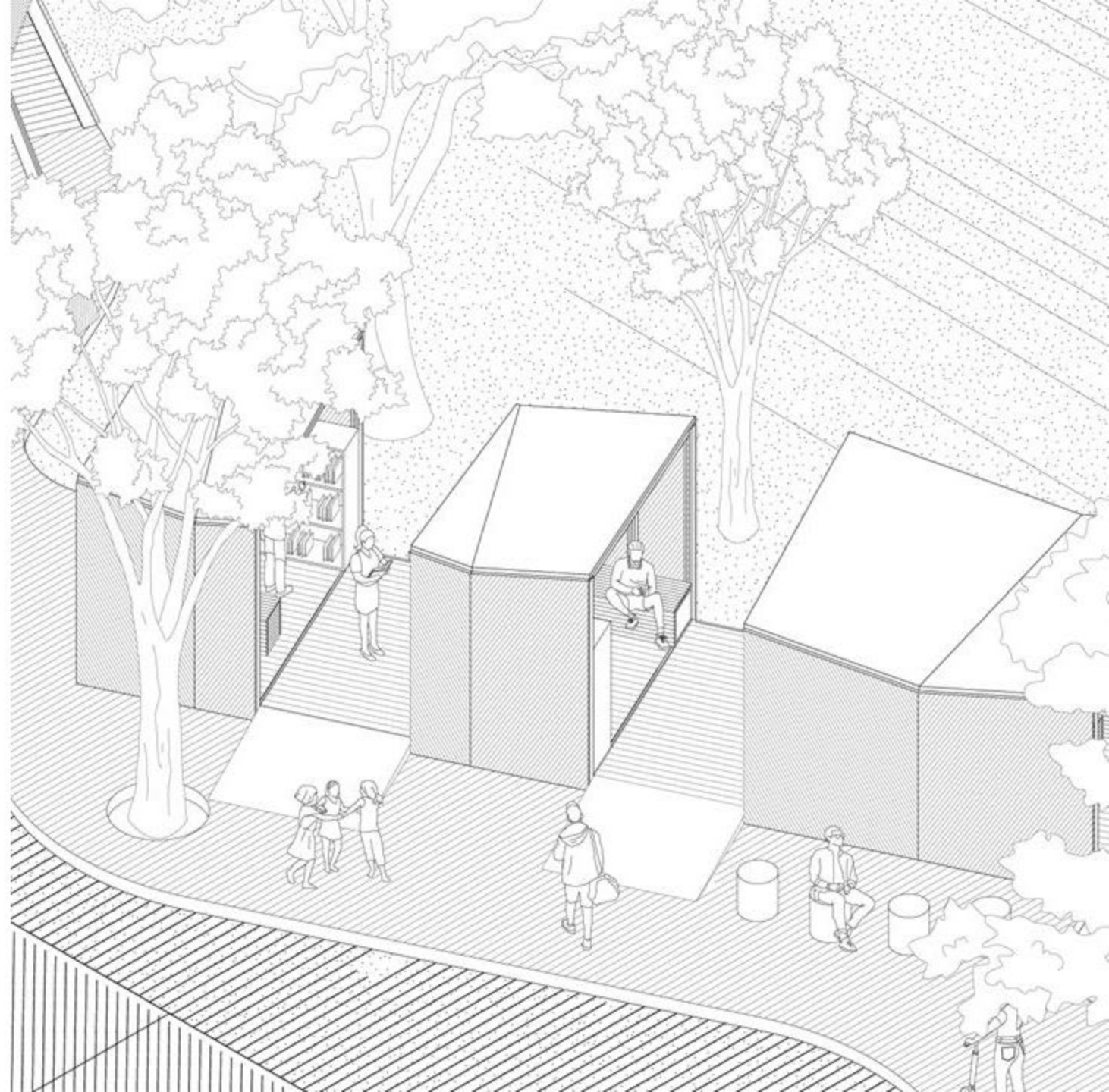
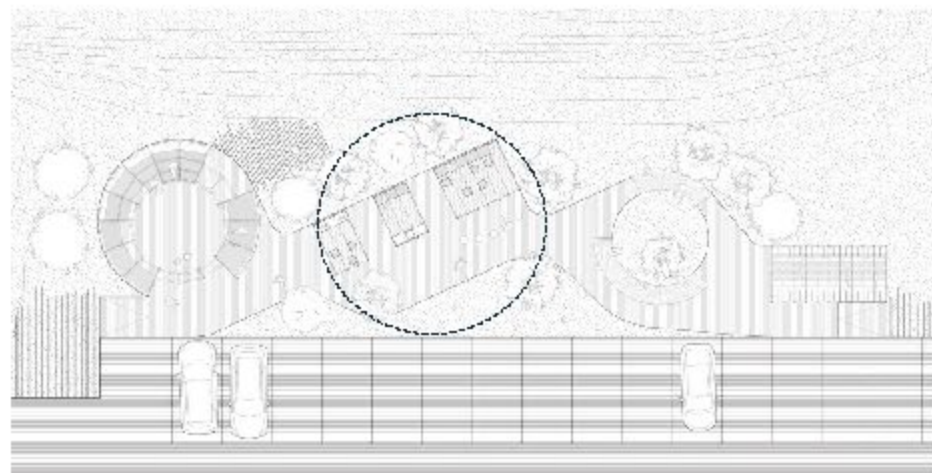






## Pods

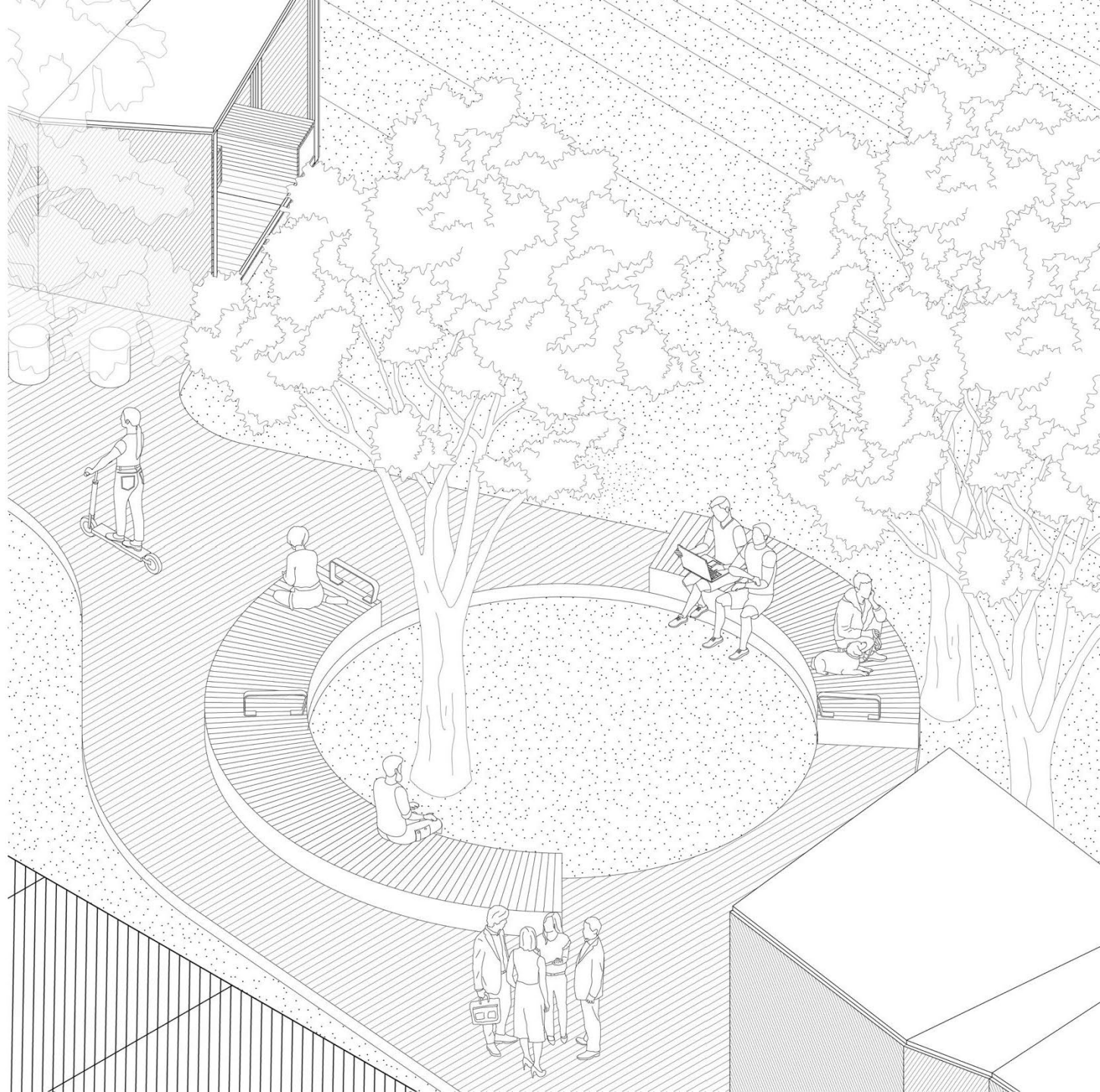
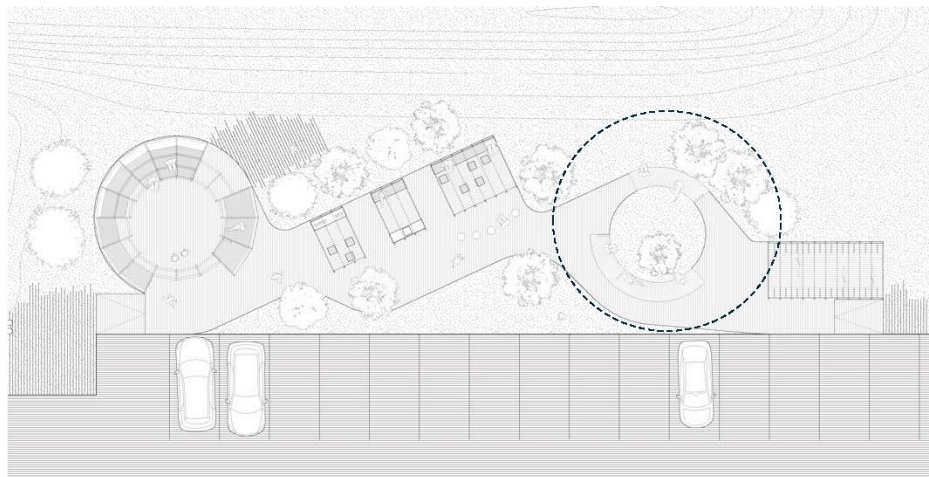
### Zoomed-in Isometric View





## Circles – Gathering + Learning

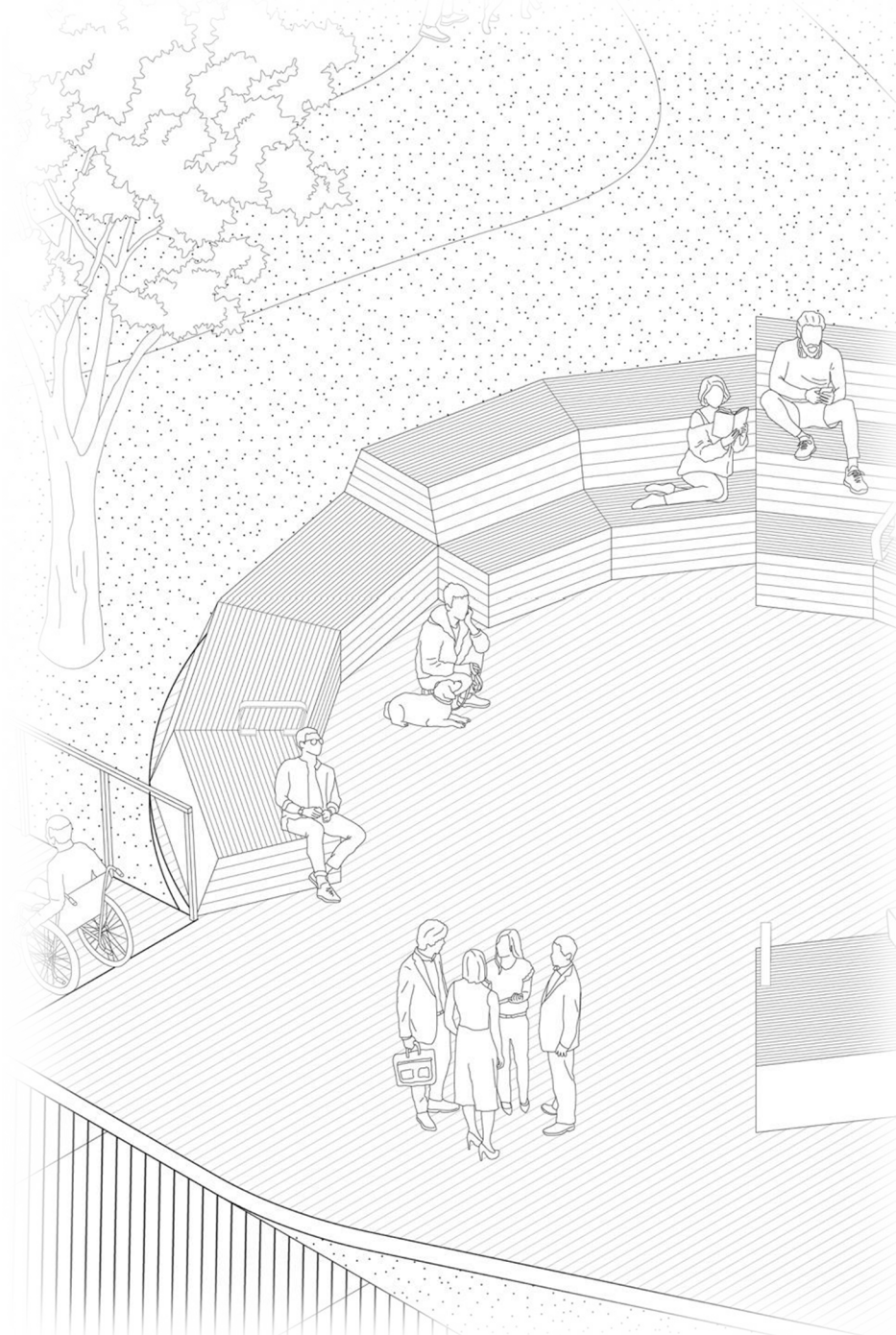
### Zoomed-in Isometric View





# Accessibility Features

- Braille wayfinding
- Railings in different locations and T-bars
- Greenery for noise reduction (bus stop and parking)
- Colour to differentiate surface changes
- Range of seating options and space for mobility devices
- Sensory planting
- Accessible ramps with handrails
- Lighting design that avoids direct lighting or up lights
- Ensuring there are no tripping hazards—for example, minimizing gaps in wood deck tiles—to allow easy navigation for anyone using mobility devices



# A Work In Progress

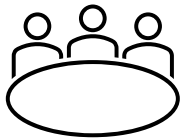
## What's Still in Progress

- Final accessibility features
- Renewable energy integration
- Enclosure for cone gathering
- Bike storage station
- Plant selection
- Final material selection
- Lighting design
- Pod seating and storage configuration



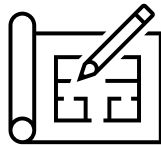


# Looking Ahead



**Final Consultation  
with Committees**

June 2025



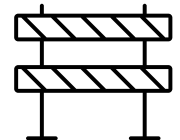
**Development of  
Final Designs**

June 2025



**Presentation of  
Designs to Council**

July 2025



**Construction  
Begins**

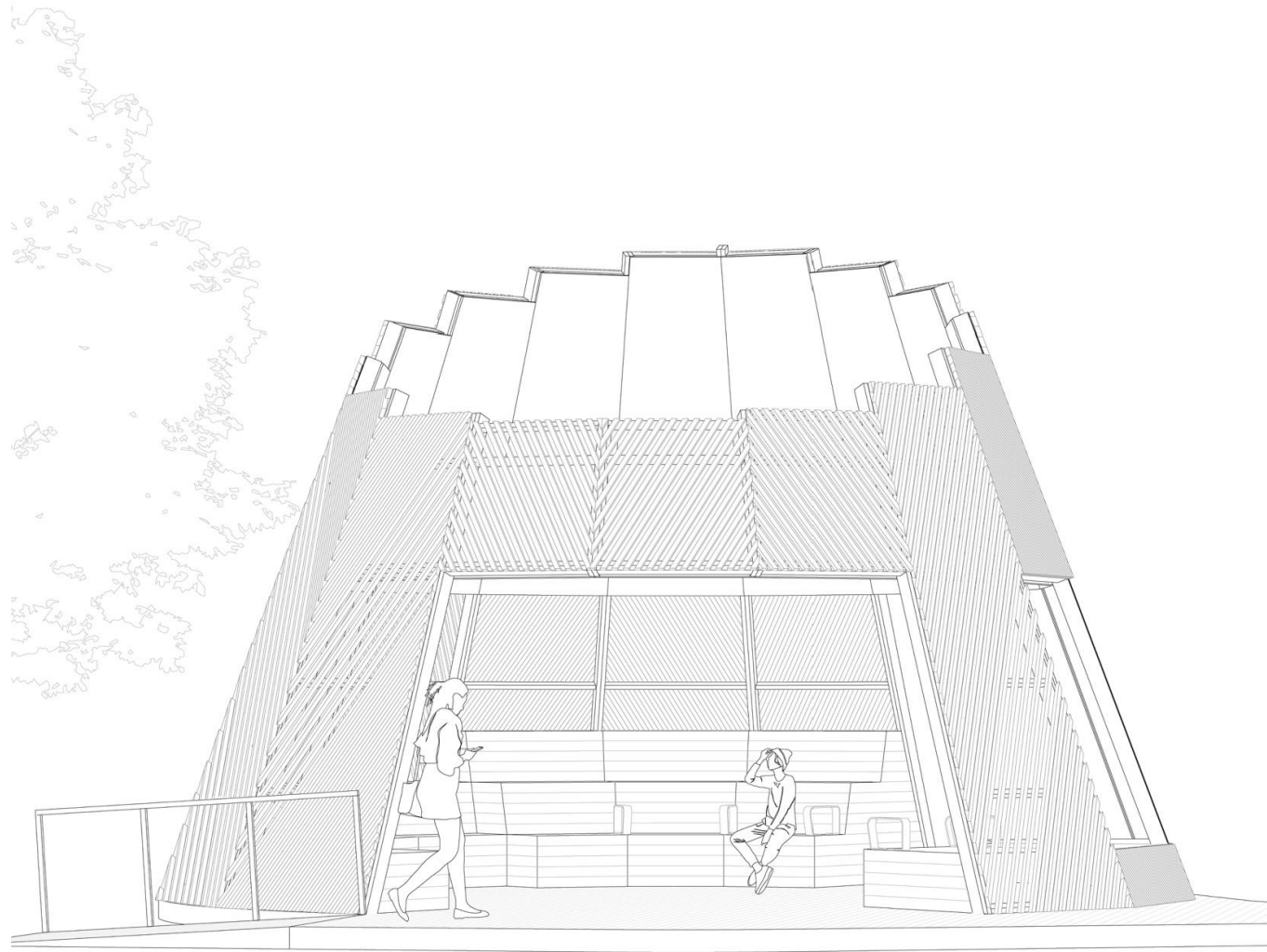
Fall 2025



# Letter of Support

To help us demonstrate the community's interest for the project, we kindly request a letter of support addressed to Dufferin County Council.

**Deadline: June 20**



**Thank You!**