

SYMBOL LEGEND	
[Symbol]	MAN DOOR LOCATIONS
[Symbol]	LOADING DOOR LOCATIONS
[Symbol]	DRIVE-IN LOCATIONS
[Symbol]	ENTRANCE & EXIT VESTIBULES
[Symbol]	DIRECTION OF TRAFFIC FLOW
[Symbol]	LANDSCAPE ISLANDS: LOW CONC. CURB CONT. AS SHOWN LOW LANDSCAPING - SEE LANDSCAPE DWG.
[Symbol]	PAINTED ISLANDS: PAINTED TRAFFIC ISLAND COLOUR AS PER PAINT SPEC.
[Symbol]	CURB CUTS FOR ACCESSIBLE ACCESS
[Symbol]	LIGHT DUTY ASPHALT PAVING: CAR PARKING AND DRIVEWAYS SEE SITE SERVICE & GRADING DWGS FOR DETAILS
[Symbol]	HEAVY DUTY ASPHALT PAVING: TRUCKING ROUTE SEE SITE SERVICE & GRADING DWGS FOR DETAILS
[Symbol]	SNOW STORAGE
[Symbol]	EASEMENT
[Symbol]	PROPERTY LINE
[Symbol]	DESIGNATED FIRE ROUTE
[Symbol]	ACCESSIBLE PARKING SIGN
[Symbol]	ACCESSIBLE PARKING STALL
[Symbol]	FIRE HYDRANT AND VALVE (REFER TO TYPICAL SITE PLAN DETAILS)
[Symbol]	FIRE DEPT. CONNECTION
[Symbol]	ALTERNATIVE FUELING STATION
[Symbol]	GARAGE ROOM
[Symbol]	ELECTRICAL ROOM
[Symbol]	MECHANICAL ROOM
[Symbol]	CART CORAL
[Symbol]	BICYCLE RACK LAYOUT CONFORMS TO YOURSELFIES FOR DESIGN AND MANAGEMENT OF BICYCLE PARKING FACILITY
[Symbol]	ROOF DRAIN
[Symbol]	FIRE ANNUNCIATOR PANEL
[Symbol]	FIRE ALARM
[Symbol]	CANADA POST FACILITY
[Symbol]	LIGHTING REFERENCE (REFER TO ELECTRICAL DRAWINGS)
[Symbol]	FIRE ROUTE SIGN
[Symbol]	IMPRESSED ASPHALT

**SITE ANALYSIS (INTERIOR)**

**ZONING:**  
M1

**LOT AREA 1:** 39,345.09 S.M. (9.72 ACRES)  
**LOT AREA 2:** 7,043.76 S.M. (1.74 ACRES)  
**TOTAL LOT AREA:** 46,388.85 S.M. (11.46 ACRES)

**BUILDING AREA:**  
EXISTING (BLDG A): 4,909.27 S.M. (52,844.67 S.F.)  
PROPOSED A1 (PHASE 1): 3,966.81 S.M. (42,699.78 S.F.)  
PROPOSED B (PHASE 2): 3,170.02 S.M. (34,122.93 S.F.)  
PROPOSED B (PHASE 3): 696.56 S.M. (7,497.95 S.F.)  
**TOTAL GROUND FLOOR:** 12,742.66 S.M. (137,165.33 S.F.)

**COVERAGE:** 27.47%  
**F.S.I.:** 0.28

**PARKING REQUIRED:**  
1,800.00 S.M. @ 1 CAR / 95 S.M. 19 SPACES (INDUSTRIAL)  
12,562.66 S.M. @ 1 CAR / 460 S.M. 28 SPACES (INDUSTRIAL)  
180 S.M. @ 1 CAR / 20 S.M. 9 SPACES (OFFICE)  
**TOTAL PARKING REQUIRED:** 56 SPACES

**PARKING PROVIDED:** 64 SPACES  
**STAFF PARKING PROVIDED:** 32 SPACES  
**TOTAL PARKING PROVIDED:** 96 SPACES

**ACCESSIBLE PARKING REQ'D:** 1 TYPE A (3.5 x 5.5)  
1 TYPE B (2.7 x 5.5)

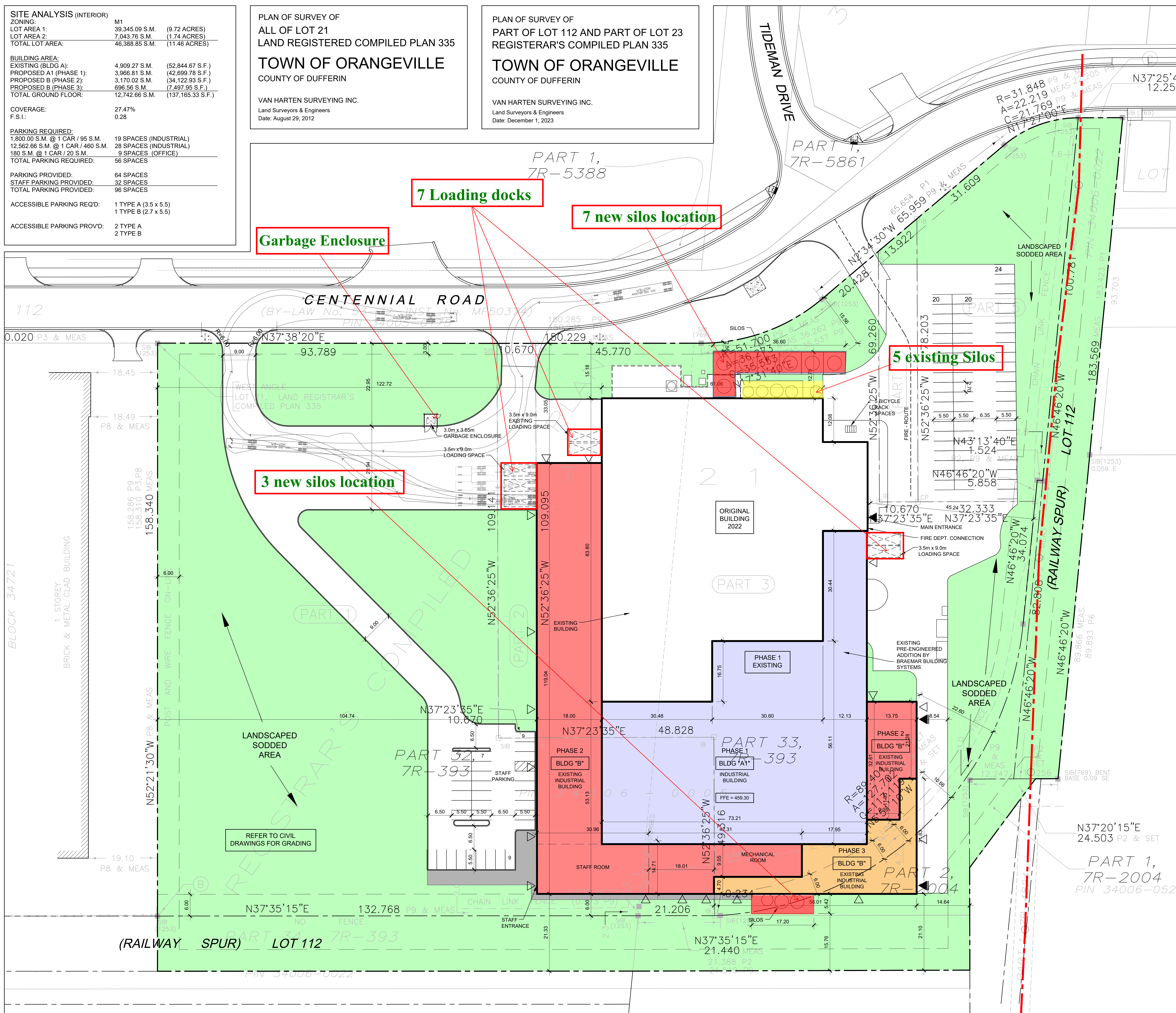
**ACCESSIBLE PARKING PROVD:** 2 TYPE A  
2 TYPE B

PLAN OF SURVEY OF  
ALL OF LOT 21  
LAND REGISTERED COMPILED PLAN 335  
**TOWN OF ORANGEVILLE**  
COUNTY OF DUFFERIN

VAN HARTEN SURVEYING INC.  
Land Surveyors & Engineers  
Date: August 29, 2012

PLAN OF SURVEY OF  
PART OF LOT 112 AND PART OF LOT 23  
REGISTERAR'S COMPILED PLAN 335  
**TOWN OF ORANGEVILLE**  
COUNTY OF DUFFERIN

VAN HARTEN SURVEYING INC.  
Land Surveyors & Engineers  
Date: December 1, 2023



1 SITE PLAN  
A-100 SCALE: 1:400

NO.	DATE	REVISIONS	BY
#2	JULY 22, 2024	CITY COMMENTS	DWL
#1	JUNE 25, 24	FINAL SILO UPDATE	DWL

**DRAWING ISSUE**

DATE	PARTICULARS	BY
	Issued for Design Approval	
	Issued for Site Plan Approval	
	Issued for Pricing and Budgeting	
03.18.24	Issued for Building Permit	E.T.
	Issued for Tendering	
	Issued for Construction	
	Issued for Record Set of Drawg.	

This drawing, as an instrument of service, is provided by and is the property of Venchiarutti Gagliardi Architect Inc. The contractor must verify and accept responsibility for all dimensions and conditions on site and must notify Venchiarutti Gagliardi Architect Inc. of any variations from the supplied information.

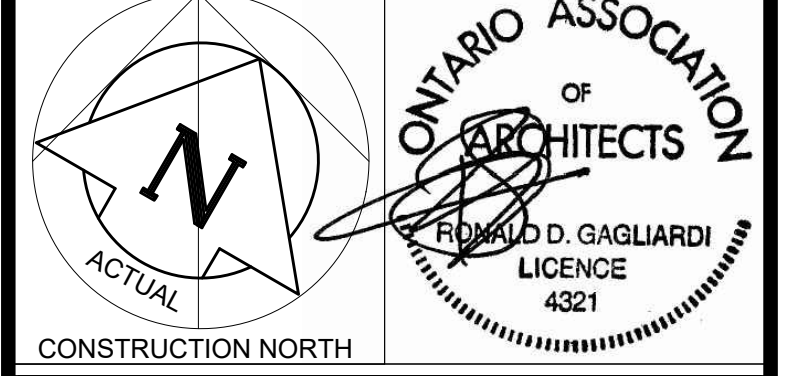
Venchiarutti Gagliardi Architect Inc. is not responsible for the accuracy of survey, structural, mechanical, electrical, etc. engineering information shown on this drawing. Refer to the appropriate engineering drawings before proceeding with the work.

Construction must conform to all applicable codes and requirements of authorities having jurisdiction. This drawing is not to be scaled.

Venchiarutti Gagliardi Architect Inc. is not responsible for any environmental conditions, geotechnical conditions or any pollutants found on site.

All architectural symbols indicated are graphic representations only.

This drawing is not to be used for construction purposes until the architectural seal is signed by the Architect of Record.



**HALLMARK DESIGN BUILD**

5945 Oriole Drive, Building 7, Suite 201  
Mississauga, ON L4W 4Y4 Canada  
www.hallmarkdesignbuild.com

Tel: (905) 625-1570  
Fax: (905) 625-5320

**VGA** Venchiarutti Gagliardi Architect Inc.

2551 John Street, Unit 13, Markham, ON L3R 2W5  
T905-477-1065 F905-477-1067  
www.vgarch.net

PROJECT

**PROPOSED INDUSTRIAL DEVELOPMENT INTERIOR ALTERATIONS**

40 CENTENNIAL ROAD  
ORANGEVILLE, ONTARIO

DRAWING NAME  
SITE PLAN  
CITY FILE #

SCALE 1:400	DATE OF DWG JULY 30, 2024	PROJECT NO. 22020-C
DRAWN BY DWL	SHEET NO. <b>A-100</b>	
CHKD BY RDG	WORKING DRAWINGS	

© 2024 C. Quality Check Systems & Engineering Inc. (Registered)  
All Rights Reserved. No part of this drawing may be reproduced or transmitted in any form or by any means, electronic, mechanical, photocopying, recording, or by any information storage and retrieval system, without the prior written permission of the Architect of Record.

LAST PLOTTING DATE: JULY 30, 2024